

Skinnoblí™



MATURE
M
CONTENT RATED BY
ESRB

SEGA®

WARNING: READ BEFORE USING YOUR PLAYSTATION®2 COMPUTER ENTERTAINMENT SYSTEM.

A very small percentage of individuals may experience epileptic seizures when exposed to certain light patterns or flashing lights. Exposure to certain patterns or backgrounds on a television screen or while playing video games, including games played on the PlayStation 2 console, may induce an epileptic seizure in these individuals. Certain conditions may induce previously undetected epileptic symptoms even in persons who have no history of prior seizures or epilepsy. If you, or anyone in your family, has an epileptic condition, consult your physician prior to playing. If you experience any of the following symptoms while playing a video game – dizziness, altered vision, eye or muscle twitches, loss of awareness, disorientation, any involuntary movement, or convulsions – **IMMEDIATELY** discontinue use and consult your physician before resuming play.

WARNING TO OWNERS OF PROJECTION TELEVISIONS:

Do not connect your PlayStation 2 console to a projection TV without first consulting the user manual for your projection TV, unless it is of the LCD type. Otherwise, it may permanently damage your TV screen.

USE OF UNAUTHORIZED PRODUCT:

The use of software or peripherals not authorized by Sony Computer Entertainment America may damage your console and/or invalidate your warranty. Only official or licensed peripherals should be used in the controller ports or memory card slots.

HANDLING YOUR PLAYSTATION 2 FORMAT DISC:

- This disc is intended for use only with PlayStation 2 consoles with the NTSC U/C designation.
- Do not bend it, crush it or submerge it in liquids.
- Do not leave it in direct sunlight or near a radiator or other source of heat.
- Be sure to take an occasional rest break during extended play.
- Keep this compact disc clean. Always hold the disc by the edges and keep it in its protective case when not in use. Clean the disc with a lint-free, soft, dry cloth, wiping in straight lines from center to outer edge. Never use solvents or abrasive cleaners.

Thank you for purchasing Shinobi™.

Please note that this software is designed only for use with the PlayStation®2 computer entertainment system. Be sure to read this instruction manual thoroughly before you start playing Shinobi™. Also note that this instruction manual cannot be re-issued, therefore please keep it in a safe place.



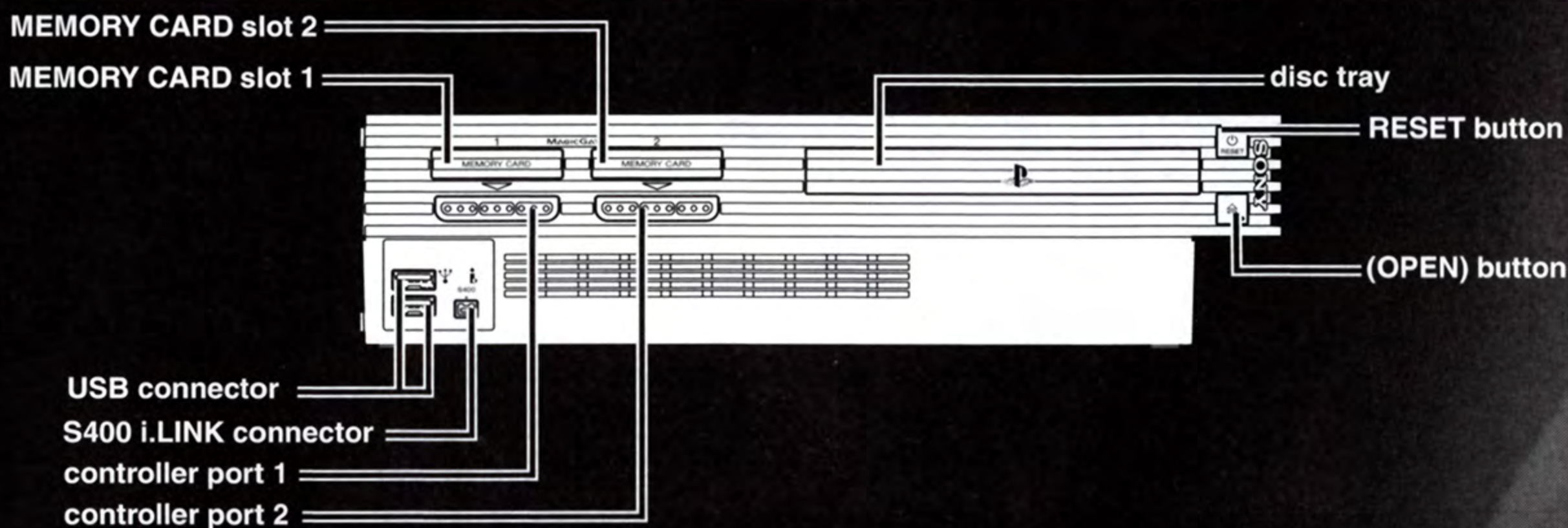
CONTENTS

GETTING STARTED	2
PROLOGUE	4
THE SHINOBI WORLD	6
CONTROLS	8
IN-GAME CONTROLS	10
STARTING A GAME	14
GAME FLOW	16
SCREEN EXPLANATION	18
TYPES OF NINJUTSU	20
STAGES	21
CHARACTERS	22
GLOSSARY	27
CREDITS	28

This game contains scenes of extreme violence and gore. Discretion is advised.



GETTING STARTED



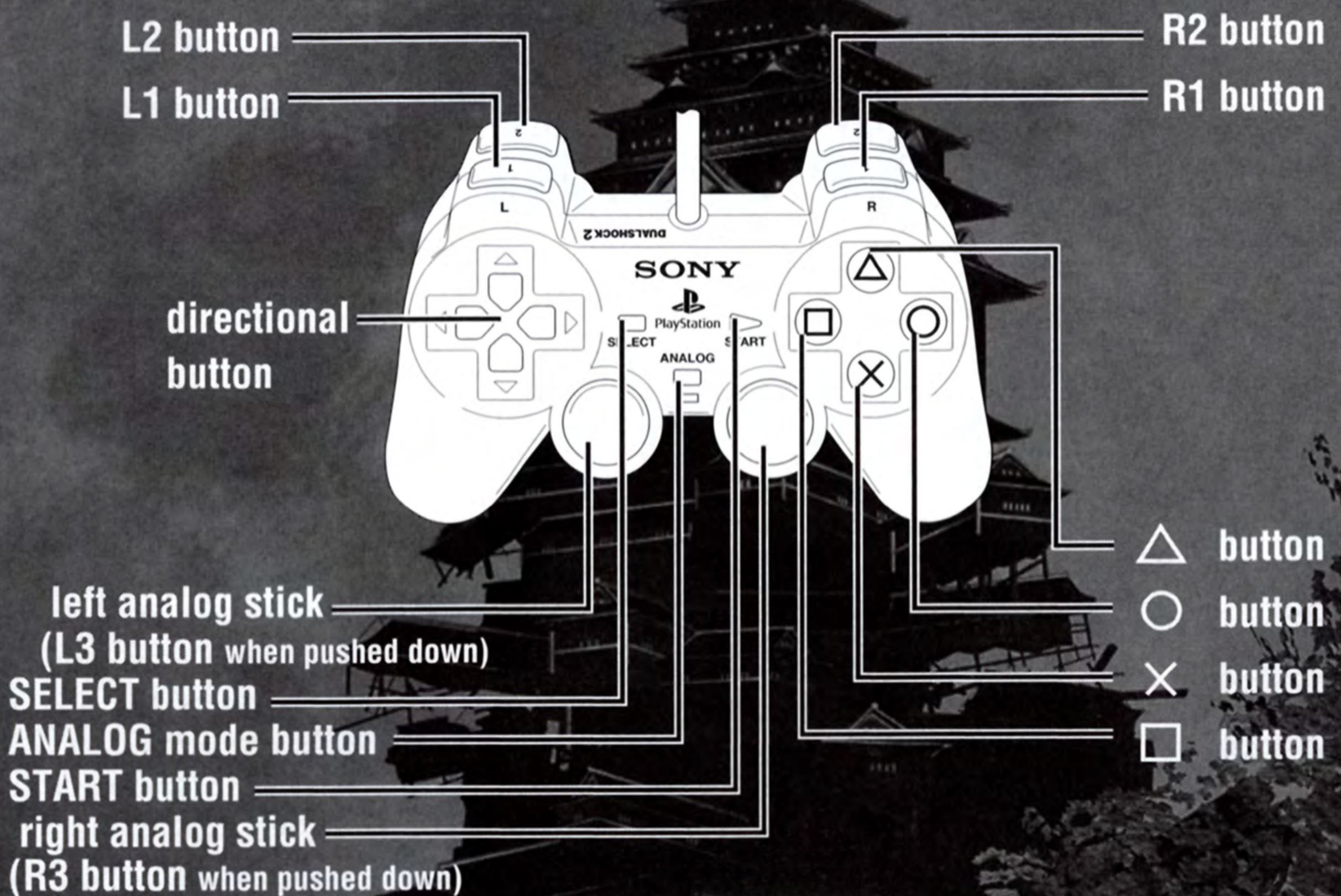
Set up your PlayStation®2 computer entertainment system according to the instructions in its Instruction Manual. Make sure the MAIN POWER switch (located on the back of the console) is turned on. Press the RESET button. When the power indicator lights up, press the open button and the disc tray will open. Place the Shinobi™ disc on the disc tray with the label side facing up. Press the open button again and the disc tray will close. Insert game controllers and other peripherals, as appropriate. Follow on-screen instructions and refer to this manual for information on using the software.

MEMORY CARD (8MB) (for PlayStation®2) (sold separately)

Shinobi™ supports MEMORY CARD slot 1. The game data is automatically saved onto a memory card (8MB) (for PlayStation®2) in Shinobi™. To load the saved game data, select "CONTINUE" on the Main Menu. Insertion or removal of the memory card (8MB) (for PlayStation®2) after switching the console on may cause data to be overwritten or lost.

Shinobi™ is a one-player game that is played using the DUALSHOCK®2 analog controller. Connect the controller to be used to controller port 1. Do not remove or insert controllers when the power is on.

DUALSHOCK®2 ANALOG CONTROLLER CONFIGURATIONS



01 02 03 04 05 06 07 08 09 10 11 12 13 14 15 16 17 18 19 20 21 22 23 24 25 26 27 28 29 30 31 32 33 34 35 36 37 38 39 40 41 42 43 44 45 46 47 48 49 50 51 52 53 54 55 56 57 58 59 60 61 62 63 64 65 66 67 68 69 70 71 72 73 74 75 76 77 78 79 80 81 82 83 84 85 86 87 88 89 90 91 92 93 94 95 96 97 98 99 100

DIRECTIONAL BUTTON - MOVEMENT

In this manual, ↑, ↓, ← and → are used to denote the direction of both the directional button and the left analog stick.

DUALSHOCK®2 analog controller

The DUALSHOCK®2 analog controller will default to ANALOG mode (mode indicator: Red) on boot-up. The vibration function can be turned ON/OFF from the "VIBRATION" section of the Option Menu (See P. 15 for details).



PROLOGUE



Raised together within the Oboro Clan, Hotsuma and Moritsune were seldom apart during their youth.

Being the younger of the two, Hotsuma looked up to Moritsune, and considered his older brother a superior warrior.

Eventually, the Oboro Clan commandment was revealed to the two boys after they discovered Akujiki, the sword that would be used in the ritual to decide the clan's leader.

The commandment deems that the next clan leader must be determined by a duel to the death between the eldest clan heirs---in this case, Moritsune and Hotsuma.

Aware of their destiny, the brothers trained incessantly, instructed by their foster parent, Kobushi.





10 years passed as the brothers refined their techniques and honed their senses.

The duel occurred beneath a full moon as cherry blossoms billowed in the wind.

Not long after, a massive earthquake struck Tokyo, and a mysterious Golden Palace appeared in the center of the city.

With the appearance of the palace came the arrival of a self-proclaimed sorcerer who summoned hellspawn to wreak havoc upon the city.

Capital members were reported dead, and the city's residents became paralyzed with fear.

With the Oboro Clan ravaged and Tokyo on the verge of collapse, Hotsuma places himself at the heart of the chaos, determined to reach the mysterious Golden Palace and avenge the death of his clan.

御
魂
集
巻
上
五
章
終

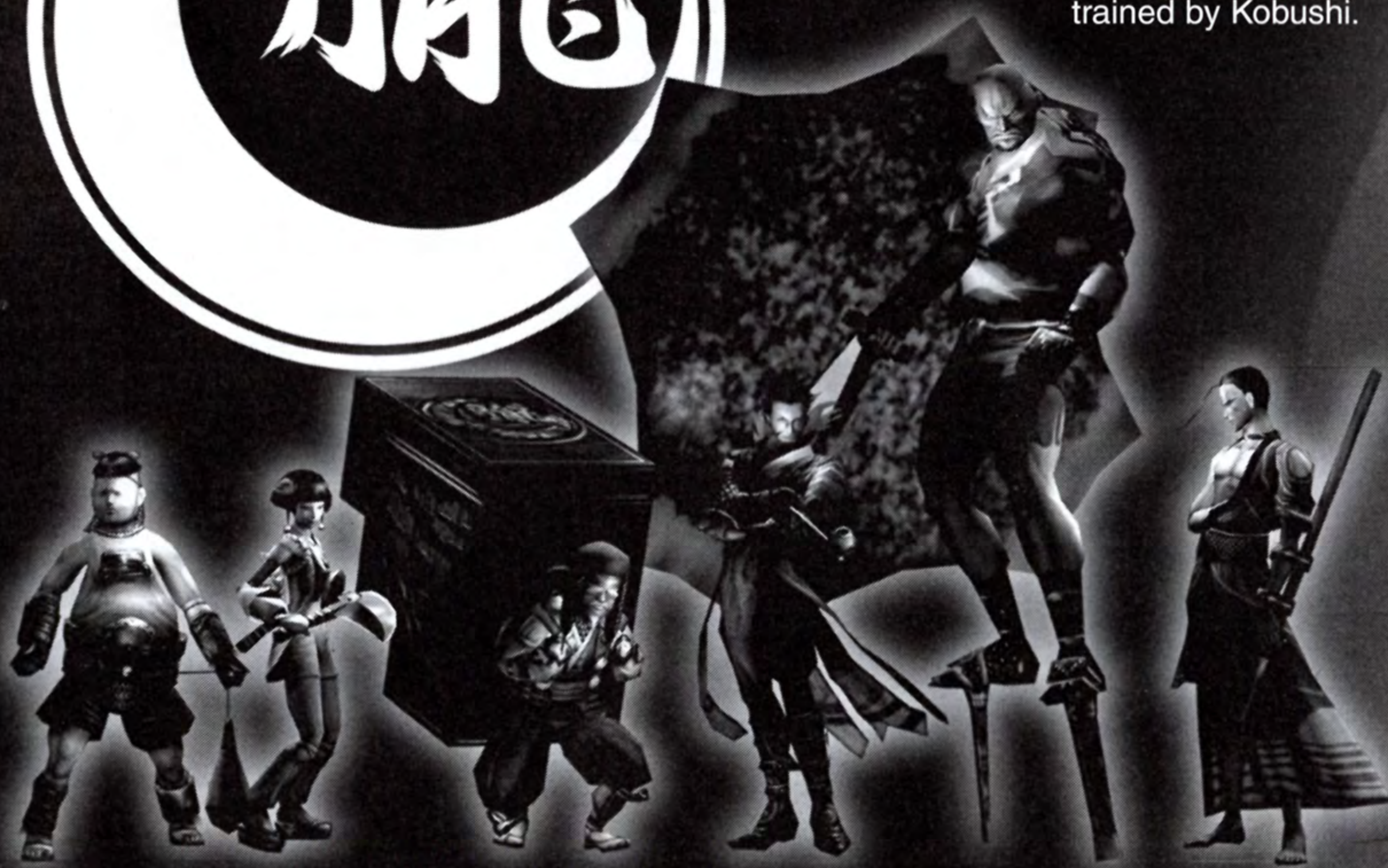


The Oboro Clan

The Oboro Clan is a ninja organization that fights against conflicts as well as the evils that exploit them.

Hotsuma and Moritsune grew up as members of the Oboro Clan and were trained by Kobushi.

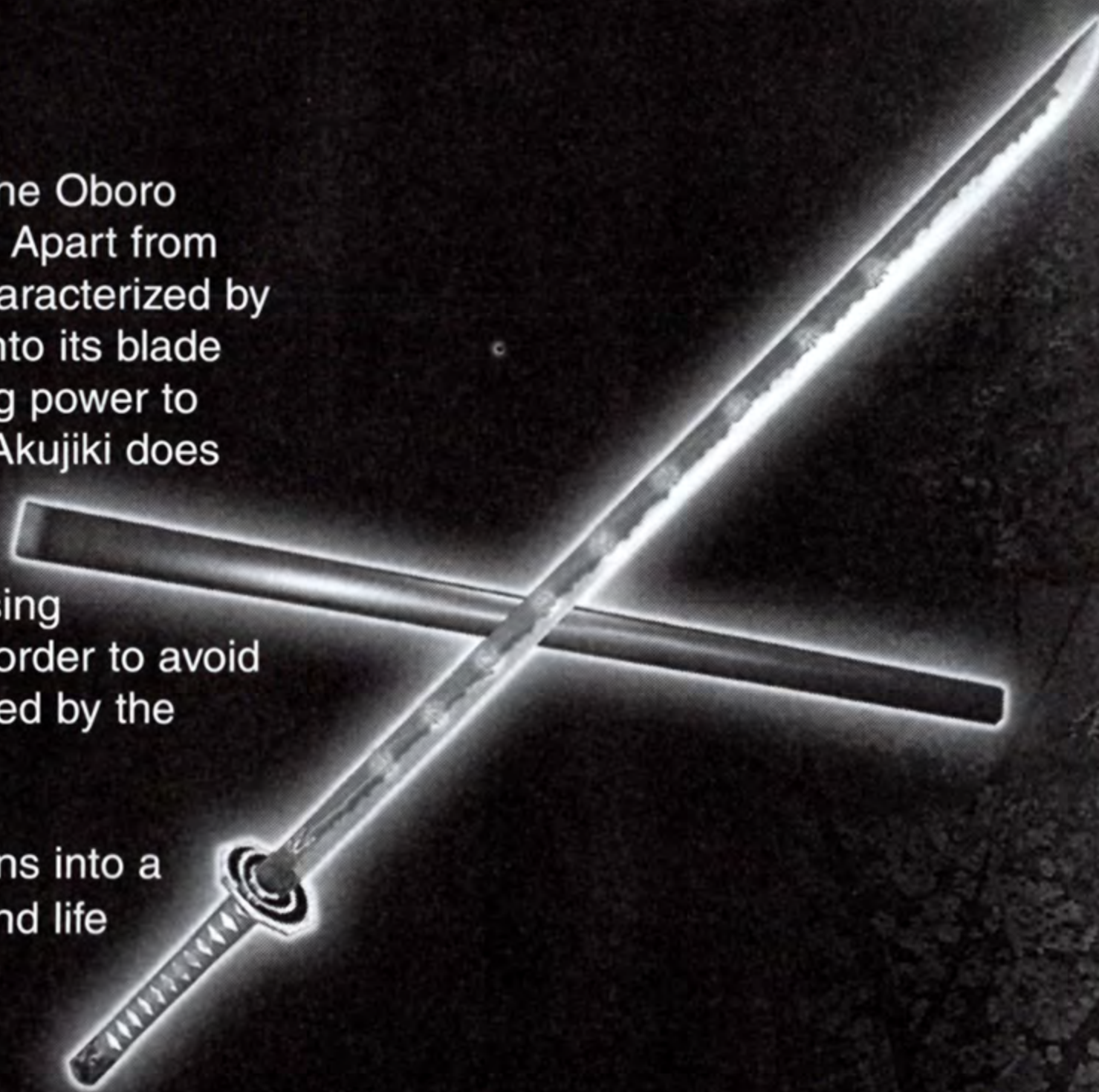
朧
魂
喰
い
死
者
の
魂
を
食
い
死
す



Akujiki

A sword kept in the possession of the Oboro Clan. Akujiki is powered by sorcery. Apart from its great cutting power, Akujiki is characterized by taking Yin from defeated enemies into its blade and converting the Yin into attacking power to increase the power of the blade. If Akujiki does not defeat enemies, then Akujiki will absorb the life and soul of its wielder. Once the wielder begins using Akujiki, he must defeat enemies in order to avoid having his own life and soul devoured by the sword's powerful sorcery.

* Note that in this game Akujiki turns into a sword; Soul Eater absorbing soul and life of its wielder from a certain stage.





CONTROLS



DUALSHOCK®2 Analog Controller

Shinobi™ is compatible with the DUALSHOCK®2 analog controller and is designed only for use with DUALSHOCK®2 analog controller. A DUALSHOCK® analog controller is NOT available to use in this game. During gameplay the mode indicator remains lit.

* These are the default controls.

START button

Displays the Pause Screen.

R2 button

Switch Lock-on targets.

L2 button

Use ninjutsu.

For types of Ninjutsu, see P.20.

L1 button

Center camera view.

directional button

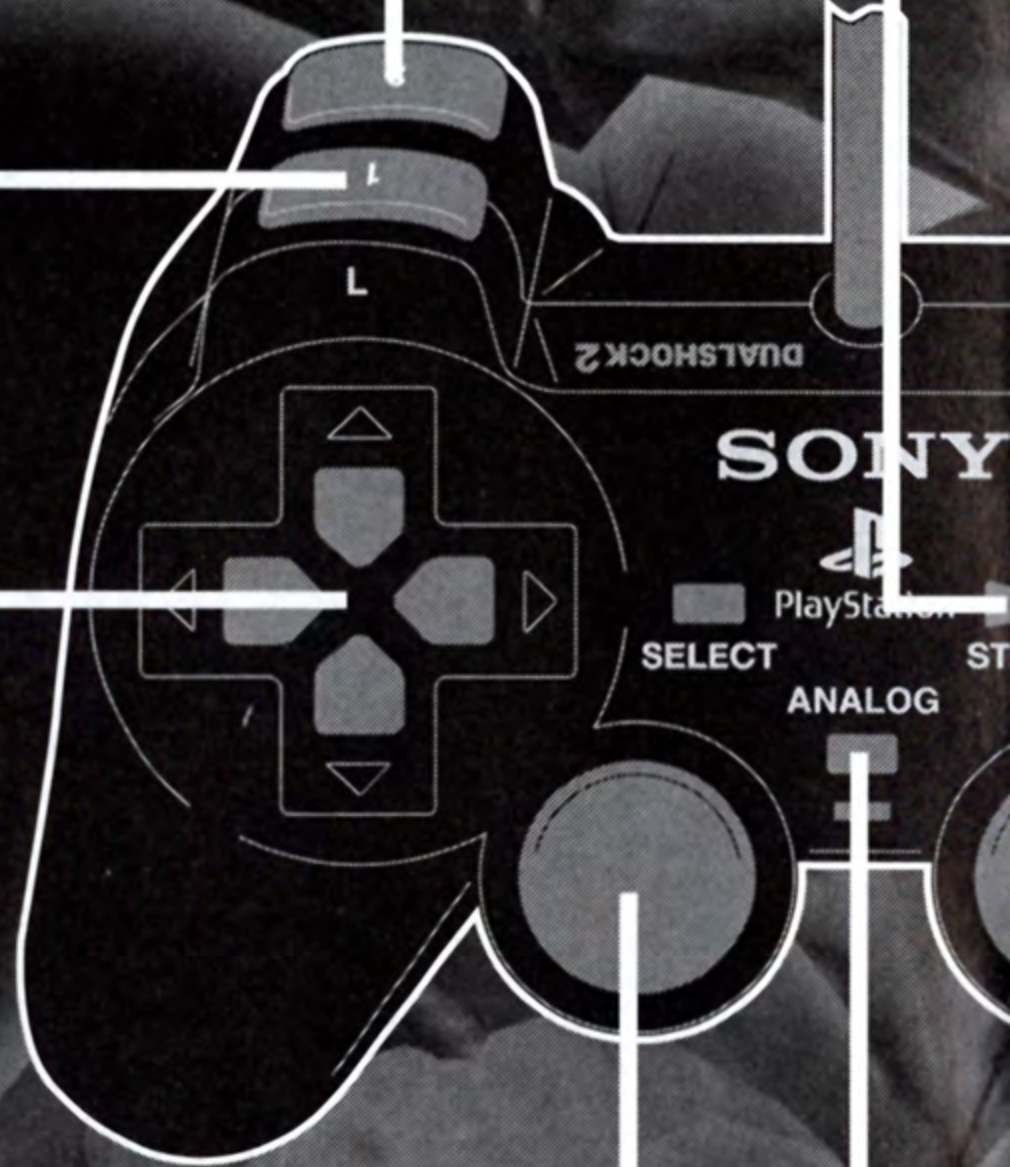
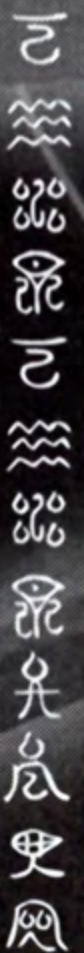
Move cursor / Select Ninjutsu.

left analog stick

Move cursor / Move character

Mode indicator

Remains lit during the game.



Vibration

The vibration settings can be switched ON/OFF in Options (See P.15).

* 1. Select button is not used in this game.

* 2. See P.10 to P.13 for detailed in-game controls.

R1 button

Lock on enemies.

See P.11 for more details.



△ button

Throw Shuriken/Cancel

See P.13 for details.



○ button

Jump / Enter

See P.10 for details.



⊗ button

Stealth Dash / Enter

See P.10 for details.



□ button

Use Akujiki (Attack)/Cancel



right analog stick

Move cursor / Rotate the camera view around a character / Adjust the camera view up and down.



IN-GAME CONTROLS



MOVE

MOVE (WALK & RUN)

Use left analog stick.

Move your character. If you only push the left analog stick slightly, your character will walk. If you push the left stick all the way to the edge, your character will run.



JUMP

Press button

Jump or double-jump over your enemies! Note that you can jump while airborne only once.



STEALTH DASH

Press button

You can move faster than eyes can see. For instance, use this dash to move around places where there is no ground to walk on or to go around the back of enemies. You can also dodge incoming enemies' attacks or move further than usual using Stealth Dash while jumping! Note you can perform this Stealth Dash while airborne only once.



Vertical text on the left margin: 2, 3, 4, 5, 6, 7, 8, 9, 10, 11, 12, 13, 14, 15, 16, 17, 18, 19, 20


MOVE
WALL RUN

(Jump and cling to the wall!)

You have the ability to run along walls. Jump towards a wall and you will be able to run along it. If you perform no actions for a certain amount of time, you will automatically fall off the wall. Note that you cannot run on damaged or dark-colored walls.


LOCK ON

Press R1 button

Press R1 button to lock onto enemies. While locking onto an enemy you will be able to dash around the back of the enemy and cut it from behind. Press and hold the R1 button to lock onto enemies.

Also, while locking onto an enemy, if you push the left analog stick towards the enemy while performing an attack combo, you will perform a spin attack that will cause nearby enemies to fly backwards from the impact. If you hold the left analog stick away from the enemy, you will perform a guard dropping kick.

 忍
に
は
た
ま
な
か
ら
く
ろ
く
ま
い
り
ま
す

1



Lock onto an enemy using R1 button.

2



Dash to the side using ⊗ button and the left analog stick.

3



Cut the enemy down from behind.



IN-GAME CONTROLS

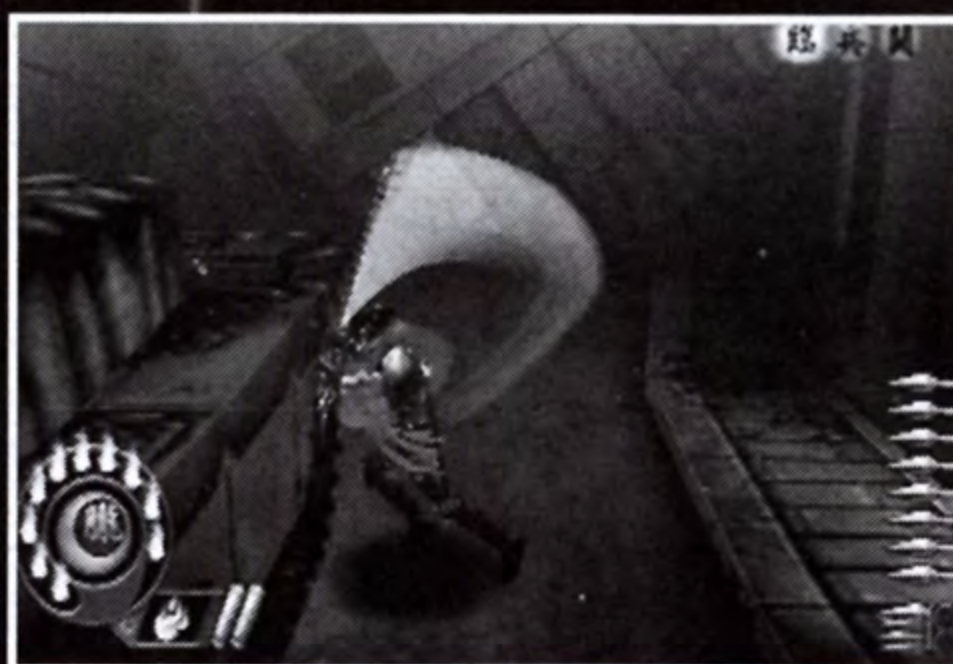


ATTACKS

ZAN

Press button

Cut enemies down one after another using Akujiki! After Akujiki has awakened, if you cut a certain number of enemies with Akujiki, its cutting power increases. The increased strength and number of defeated enemies is reflected by the number of burning icons in the top right of the screen (refer to P.16 under TATE for more details).



SPECIAL ATTACK

Hold down button and release during LOCK-ON

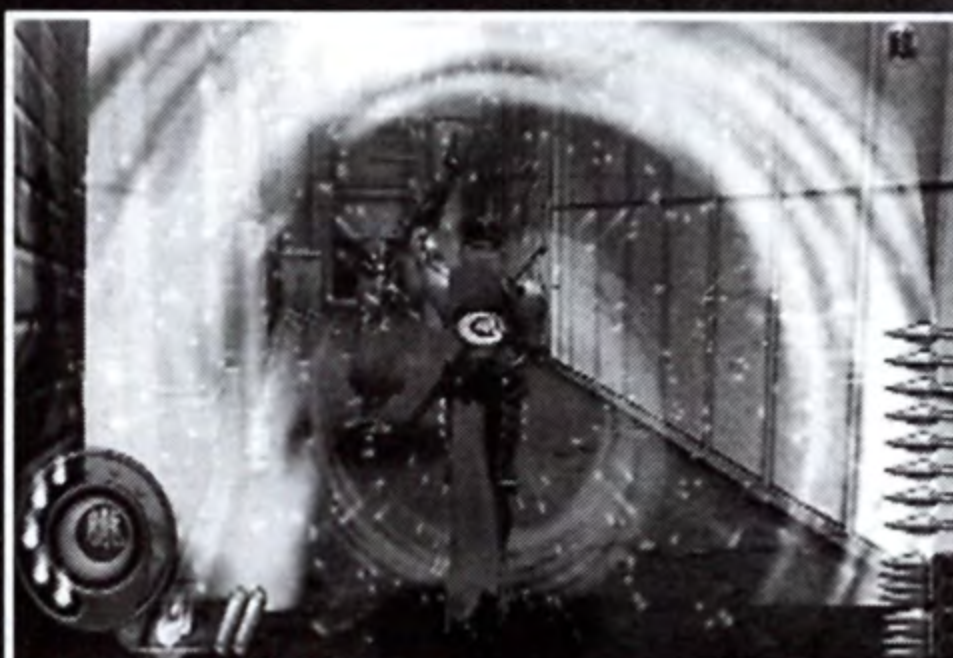
Shove enemies away using this powerful attack by holding down button for a while and then releasing it during Lock-on! Note that performing this attack burns up some of your Slash Gauge, thus keep an eye on your Slash Gauge and do not use it too many times. Also without a certain amount of Slash Gauge saved you cannot perform this attack.



NINJUTSU (NINJA MAGIC)

Press L2 button

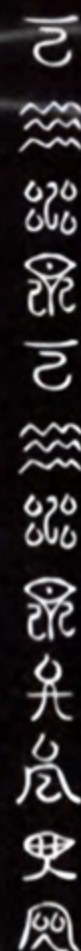
Destroy enemies using super strong Ninjutsu. The number of times you can use this magic is limited. To use Ninjutsu, select a magic using the directional button, and then press the L2 button (refer to P.20 for more details).



KA'EN

KAMAITACHI

RAIJIN





ATTACKS

SHURIKEN (NINJA DAGGER)

Press **△** button

Throw Shurikens at enemies to paralyze them momentarily. Shurikens are in limited supply so use them wisely.



SHURIKEN BURST

Press **△** button while double-jumping.

Throw daggers at several enemies around you and paralyze them momentarily. Note that 8 daggers (1 complete bundle) are required to perform a Shuriken Burst.



咒
之
咒
咒
咒
咒
咒
咒
咒
咒

ITEMS

MAKIMONO



Makimono can be found in various locations. Search the environments to find as many Makimono as you can (3 max)!

SHURIKEN



You can obtain Shurikens by defeating enemies. Use them effectively to give yourself an advantage in battle.

YIN



Yin can be obtained by defeating enemies. It restores SLASH Gauge.

YANG



Yang can be obtained by defeating enemies. It restores LIFE Gauge.



STARTING A GAME



After inserting the Shinobi™ disc into the console and turning the power on, the opening scene begins. Press **START** button to display the Title Screen, and press **X/□** button or **START** button to display the Main Menu.



MAIN MENU

NEW GAME

Start a new game and prepare for a series of intense battles. As you progress through the game, more difficulties will become available. At the beginning, Hotsuma will be the only playable character, but as you progress through the game, more playable characters will be available to choose from.



CONTINUE

Resume gameplay from a previous game (displayed after you have played the game once). You can restart gameplay from the stage immediately following the last stage successfully cleared with a character, or from a level saved in a previous game.

EXTRA

In the beginning, all extra items will be marked with question marks and remain locked. You must progress through the game to unlock these items and reveal their secrets. Note that in Stage Select you can only play the stage chosen.









MAIN MENU

OPTIONS

Change settings such as gameplay settings, button configuration and extra features. Details of each option item are as follows:

SUBTITLE	Turn English subtitles on or off.
VOICE	Set voices to English or Japanese in the game and movies.
VIBRATION	Turn controller vibration on or off.
SOUND	Set sound to stereo or monaural.
BUTTON CONFIG.	Change the button configuration.
SCREEN POSITION	Adjust the position of the screen.
BRIGHTNESS	Adjust the brightness of the screen.
FINISHED	To save the current settings and return to the Title Screen, press  or  button. To return to the Title Screen without saving, press  or  button.

SAVE & LOAD

SAVE

In this game, the following data is automatically saved onto a memory card (8MB) (For PlayStation®2) (sold separately) even after the power is switched off.

- The last stage cleared during your previous play session.
- The results displayed when you cleared a stage.

To save game data onto a memory card (8MB) (For PlayStation®2), insert a memory card (8MB) (For PlayStation®2) into MEMORY CARD slot 1.

At least 370KB of free space is required. Only one file can be saved onto a memory card (8MB) (For PlayStation®2).

LOAD

If a memory card(8MB) (For PlayStation®2) with saved game data is already inserted into MEMORY CARD slot 1 upon boot-up, the saved file will be automatically loaded so that you can resume your game.

忍 之 武 士 伝 説 2



2

KEKKAI



To open one gate you must defeat all the enemies. To open other gate you must destroy all exiting stone pillars.

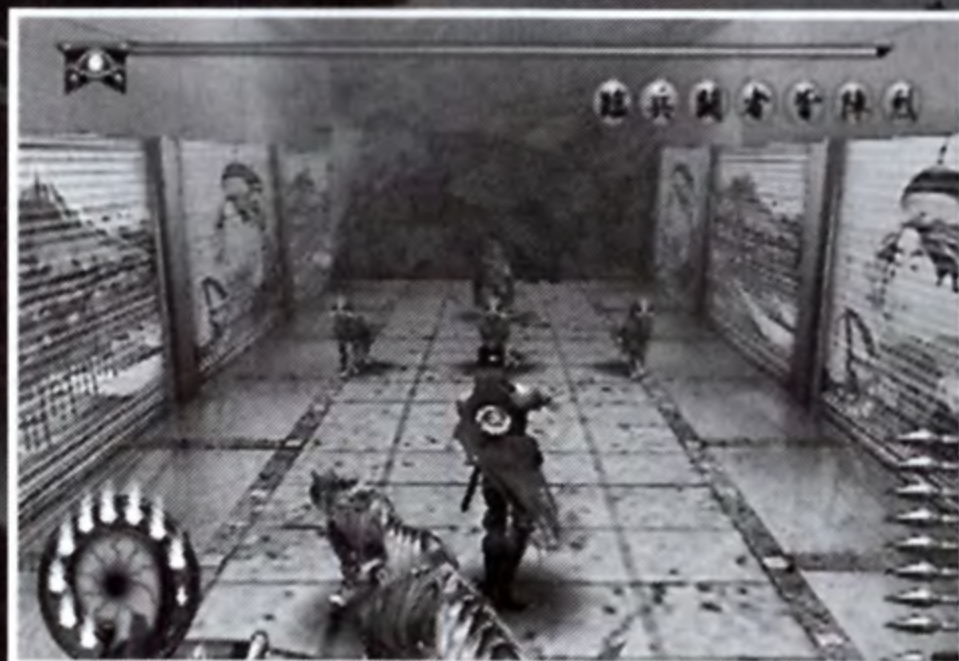


3

BOSS BATTLE



You have to defeat a boss in order to clear a stage. Use your skill to defeat the boss and proceed to the next level!



4

STAGE CLEAR



After clearing a stage and defeating a boss, the results screen will be displayed. The results will be saved onto a memory card (8MB) (For PlayStation®2) automatically.



忍之里に於ける此の地獄

GAME OVER

If your LIFE Gauge goes down to 0 or you fall off a stage, the game will be over. Then you will be asked to "RETRY" or "QUIT." If "RETRY" is selected, you can restart from the stage where you died. If "QUIT" is selected, you will return to the Main Menu.



STAGE CLEAR



① **STAGE CLEARED** : Displays the stage you have cleared.

② **TIME** : Displays the time it took you to clear the stage.

③ **KILL** : Displays the percentage of how many enemies you have defeated as well as the points earned by defeating enemies.

④ **TATE POINT** : Displays the points you earned through the use of TATE during the stage.

⑤ **BOSS POINT** : The less attacks you performed to defeat the boss, the greater the BOSS POINT you earn. If you defeat the boss with one attack, you will obtain a full score.

⑥ **MAKIMONO** : Displays the number of Makimono remaining after clearing the stage.

⑦ **NO DAMAGE** : You can get points if you cleared a stage without sustaining any damage.

⑧ **TOTAL** : Displays the total points you obtained in the stage.

⑨ **SECRET**
Displays how many secret items you found in the stage. The symbol for the Secret Item is a family crest from the Oboro Clan. The more Secret Items you find, the more items in the Extra Menu become unlocked.



⑩ **RANK** : Displays a rank (C,B,A or S) based on your gameplay in the stage.



TYPES OF NINJUTSU



There are 3 types of Ninjutsu (Ninja Magic) you can inflict. Use Ninjutsu to try to knock down enemies around you at one go! To use, choose a magic using the directional buttons and press L2 button.

KA'EN

Inflicts fire by combusting vital energy absorbed and stored inside the body.

Use this magic to cause great damage to enemies around you. Using this magic once consumes one Makimono.



KAMAITACHI

Using sword pressure, hurl razor-sharp shock waves at your enemies. This magic is especially useful when attacking long range enemies.

You can inflict this magic 6 times per Makimono.



RAIJIN

Use this magic to become invincible from attacks or damage by enemies.

You can perform this magic to protect yourself for a certain amount of time per Makimono.



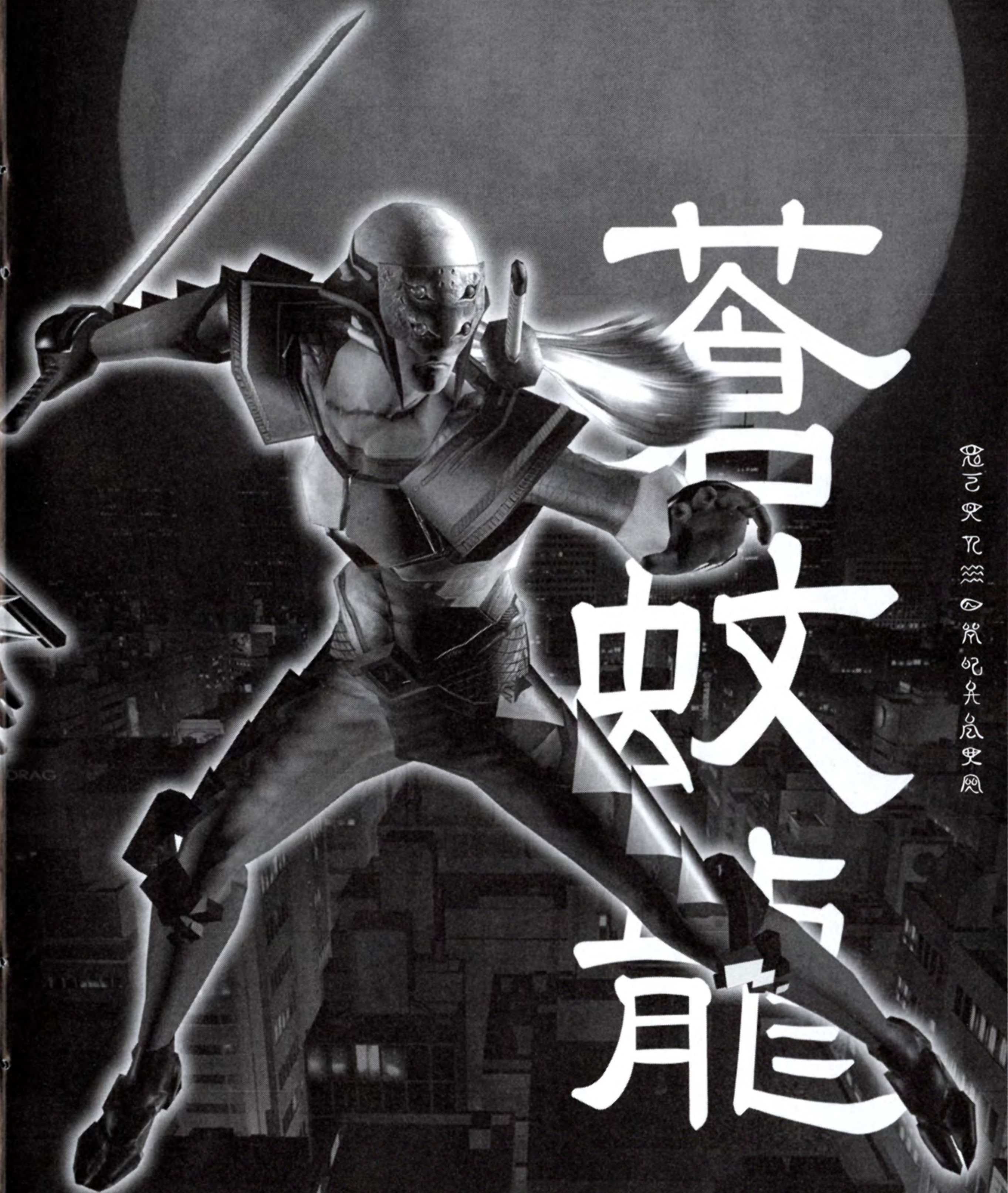


秀 真

咒
水
雷
火
風

Hotsuma

Leader of the Oboro Clan, Hotsuma must attempt to restore order to the capital city and investigate the death of his clan. Equipped with Akujiki, a soul-eating sword, Hotsuma must infiltrate the city and battle hordes of aggressive enemies. Hotsuma's past is darkened by the fact that he defeated his brother in a duel to the death to decide who would become the leader of the Oboro Clan.



龍馬 高敷 蒼

Aomizuchi

A mysterious ninja who pursues Hotsuma at all costs. This shadowy figure destroyed the capital city and assisted in the assault of the Oboro village.



Ageha

A kunoichi (female ninja) who deserted the Oboro Clan after Moritsune's death. Ageha was a childhood friend of both Hotsuma and Moritsune, and held strong objections to the clan's insistence on performing the violent ritual to decide its next leader.

疾風

疾風の影を踏みしめ、闇を切り裂く。彼女の剣は、正義の光を放つ。



Shirakumo

Shirakumo is one of the Four Hellspawn Lords. It appears as a giant tarantula with a tiger's head and 8 eyes.

白
雲
毒
母

☰
☷
☱
☲
☴
☵
☶
☳
☴
☱
☲
☴
☵
☶
☳
☴



Benisuzume

Benisuzume is one of the Four Hellspawn Lords. It appears as a giant moth, and swarms its enemies with fire butterflies and a variety of fire attacks.

工
天
火
蛾



Kurakuda

Kurakuda is one of the Four Hellspawn Lords. It is a Nine-tailed Fox from Japanese mythology, and can move faster than the eye can see, leaving behind shadowy "afterimages."

九
尾
蛇



Oboro

The Oboro Clan are experts at waging conflicts against evil, all unrecorded by history. In the Oboro there are 3 ranks in 3 levels; Jyounin, Chunin and Genin.

Jyounin

The high-level experts in the Oboro with special fighting abilities are assigned to become Jyounin. Hotsuma, Ageha and Moritsune belong to this group.

Chunin

When the Oboro fight in groups, Chunin arrange the group and instruct Genin how to fight.

Genin

Not especially excelled in fighting, however, greatly determined to follow instructions from Chunin in any situations. Also Genin are good at fighting in groups.

Shuriken

Specially designed knives Ninjas use. There are various types of Shuriken. The one called Kunai enables Ninja to throw several Shuriken simultaneously or continuously.

Shuriken Burst

A special move designed for the Oboro. Shuriken Burst enables you to throw 8 Shurikens simultaneously while airborne.

Ninjutsu

Ninjutsu used in the Oboro village are confidential. By using Makimono which the secrets of Ninjutsu are written on, Ninja can perform super-human techniques.

Ka'en

A type of ninjutsu that creates a fiery explosion, damaging all enemies in the nearby vicinity.

Kamaitachi

A ninjutsu that enables Hotsuma to swing his blade so quickly as to create razor-sharp vacuums of air. These vacuums act as projectiles and can slice enemies from afar.

Raijin

This ninjutsu generates a powerful shield of static electricity that prevents Hotsuma from taking damage for a limited time.

忍
之
術
に
よ
り
て
は
た
か
く
も
う
た
ま
は
す



CREDITS



The following credits list the staff responsible for the localization, marketing and manual production for Shinobi. See the in-game credits for the complete list of the original development staff.

SEGA of America Inc.

Senior Product Manager

Rob Alvarez

Associate Product Manager

Cord Smith

VP of Entertainment

Marketing

Mike Fischer

Creative Services

Robert Schonfish

Erica Forte

Vicki Morawietz

Arianne McCarthy

VP of Product

Development

Jin Shimazaki

Localization Manager

Osamu Shibamiya

Localization Producer

Klayton Vorlick

Director of QA

Deborah Kirkham

QA Manager

Arnold Feener

Lead Tester

Demetrius Griffin

Special Thanks

Peter Moore

Chris Gilbert

Kirsten Merit

Bryce Baer

Caroline McNiel

Teri Higgins

Sega.com

SEGA CORPORATION (Sega Of Japan)

-Manual Production-

Supervisor

Yoshihiro Sakuta

Designer

Satoru Ishigami

Writer/Translator

Asako Miyajima

Webtone Productions

-English Voice Cast-

Jordan Rosa

- Hotsuma

Casey Robertson

- Moritsune

Irene Trapp

- Ageha

Roger Jackson

- Hiruko Ubusuna(old)

Erin Clark

- Hiruko Ubusuna(young)

Theresa Lubeley

- KagariUbusuna

Also Starring:

Kevin Miller

Terry McGovern

Gary Martinez

Charles Martinet

-Japanese Voice Cast-

Daisuke Kishio

- Hotsuma

Toshiyuki Morikawa

- Moritsune

Kayo Deguchi

- Ageha

Kan Tokumaru

- Hiruko Ubusuna(old)

Wataru Takagi

- Hiruko Ubusuna(young)

Kumi Sakuma

- Kagari Ubusuna

Also Starring:

Tomomichi Nishimura

Takashi Nagasako

Tetsuo Mizutori

Osamu Hosoi

Masahiro Okazaki

Sayaka Aida

Kohsuke Toriumi

Chieko Sasai

Sayori Ishizuka

Michihiko Hagi

Special Thanks

-Sega Of Japan-

Shinobu Shindo



****THIS LIMITED WARRANTY IS VALID FOR SEGA PRODUCTS FOR PLAY ON PLAYSTATION®2 COMPUTER ENTERTAINMENT SYSTEM MANUFACTURED FOR SALE IN AND PURCHASED AND OPERATED IN THE UNITED STATES AND CANADA, ONLY!***

Limited Warranty

Sega of America, Inc. warrants to the original consumer purchaser that the PlayStation®2 Game Disc shall be free from defects in material and workmanship for a period of 90-days from the date of purchase. If a defect covered by this limited warranty occurs during this 90-day warranty period, the defective PlayStation®2 Game Disc will be replaced free of charge. This limited warranty does not apply if the defects have been caused by negligence, accident, unreasonable use, modification, tampering or any other causes not related to defective materials or workmanship. Please retain the original or a photocopy of your dated sales receipt to establish the date of purchase for in-warranty replacement. For replacement, return the Game Disc, with its original packaging and receipt, to the retailer from which the software was originally purchased. In the event that you cannot obtain a replacement from the retailer, please contact Sega to obtain support.

Obtaining technical support/service

To receive additional support, including troubleshooting assistance, please contact Sega at:

- web site <http://www.sega.com>
- e-mail support@sega.com
- telephone 1-716-650-6702

LIMITATIONS ON WARRANTY

ANY APPLICABLE IMPLIED WARRANTIES, INCLUDING WARRANTIES OF MERCHANTABILITY AND FITNESS FOR A PARTICULAR PURPOSE, ARE HEREBY LIMITED TO 90-DAYS FROM THE DATE OF PURCHASE AND ARE SUBJECT TO THE CONDITIONS SET FORTH HEREIN. IN NO EVENT SHALL SEGA OF AMERICA, INC. BE LIABLE FOR CONSEQUENTIAL OR INCIDENTAL DAMAGES RESULTING FROM THE BREACH OF ANY EXPRESS OR IMPLIED WARRANTIES. THE PROVISIONS OF THIS LIMITED WARRANTY ARE VALID IN THE UNITED STATES ONLY. SOME STATES DO NOT ALLOW LIMITATIONS ON HOW LONG AN IMPLIED WARRANTY LASTS, OR EXCLUSION OF CONSEQUENTIAL OR INCIDENTAL DAMAGES, SO THE ABOVE LIMITATION OR EXCLUSION MAY NOT APPLY TO YOU. THIS WARRANTY PROVIDES YOU WITH SPECIFIC LEGAL RIGHTS. YOU MAY HAVE OTHER RIGHTS WHICH VARY FROM STATE TO STATE.

SEGA is registered in the U.S. Patent and Trademark Office. Sega, the Sega logo and Shinobi are either registered trademarks or trademarks of Sega Corporation or its affiliates.

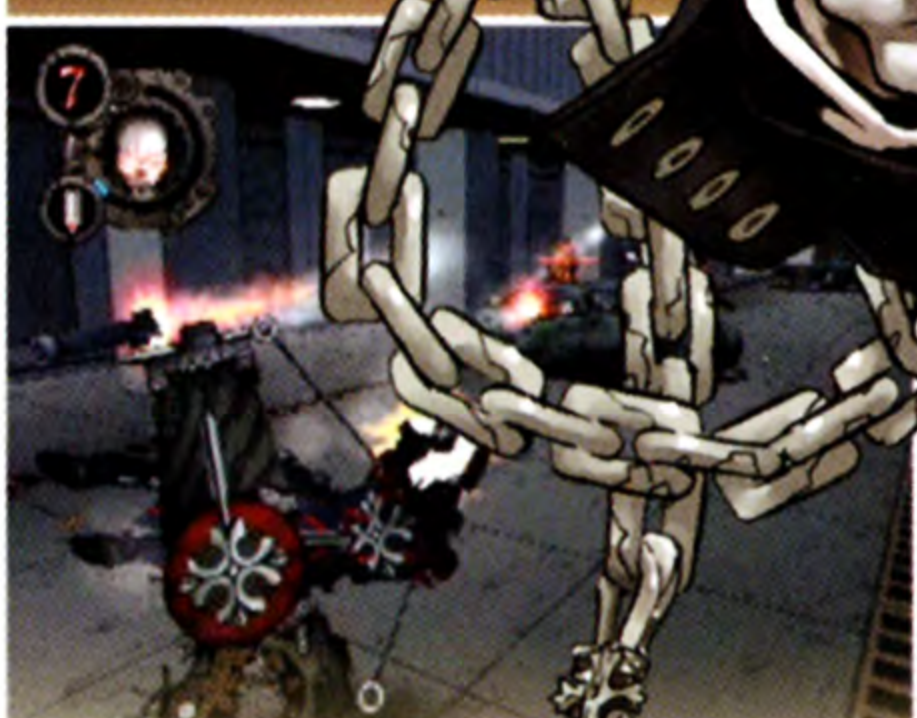
© OVERWORKS / SEGA, 2002. This game is licensed for use with PlayStation 2 only. Copying and/or transmission of this game is strictly prohibited. Unauthorized rental or public performance of this game is a violation of applicable laws. SEGA of America, Inc., 650 Townsend Street, Suite 650, San Francisco, CA 94103. All Rights Reserved. www.sega.com. Programmed in Japan. Made and printed in the USA.

Fonts used in this game are supported by FONTWORKS International Limited. FONTWORKS product-names and FONTWORKS logos are registered trademarks or trademarks of FONTWORKS International Limited. Copyright 1994-2002 FONTWORKS International Limited. All rights reserved.

Available
Now

GUNGRAVE™

Exact your deadly revenge with precision and grace.
Unlockable secret movies and action figures.
Dramatic movie-quality cut-scenes.
Super-powered special weapons.
Destructible environments.
Nightmarish boss battles.
Disposable enemies.



SEGA of America, Inc., 650 Townsend Street, Suite 650, San Francisco, CA 94103

RED
ENTERTAINMENT

SEGA®

SEGA is registered in the U.S. Patent and Trademark office. Sega is a registered trademark of Sega Corporation. GUNGRAVE is a trademark of Red Entertainment Corporation © RED/NIGHTOW 2002. www.sega.com.

Licensed for play on the PlayStation 2 computer entertainment systems with the NTSC U/C designation only. "PlayStation" and the "PS" Family logo are registered trademarks of Sony Computer Entertainment Inc. The ratings icon is a trademark of the Interactive Digital Software Association. Manufactured and printed in the U.S.A. THIS SOFTWARE IS COMPATIBLE WITH PLAYSTATION 2 CONSOLES WITH THE NTSC U/C DESIGNATION. U.S. AND FOREIGN PATENTS PENDING.

U.S. AND FOREIGN PATENTS PENDING.

MATURE
M
CONTENT RATED BY
ESRB
BLOOD
VIOLENCE